



THE
BRUNTS
ACADEMY

The Brunts Academy
The Park, Park Avenue,
Mansfield, Nottinghamshire,
NG18 2AT

Telephone: +44 (0)1623 623149



THE
BRUNTS
ACADEMY

AMBITION
INTEGRITY
INCLUSIVITY
ENDEAVOUR
RESILIENCE



THE
BRUNTS
ACADEMY



Carl Atkin
Principal

...from the Principal

Our vision is to open minds, creating opportunities for all to believe in themselves, achieve their potential and develop the skills needed to succeed and enjoy life.

The Brunts Academy, which is part of the Evolve Trust is a popular and oversubscribed high achieving secondary school with a great tradition of success. We believe that an outstanding education develops our students academically, socially and morally, giving them the knowledge and skills to be successful at school and in life. We also feel it is important for our young people to develop outside of the classroom and we offer a wide range of enrichment and extra-curricular opportunities to help prepare our students for the next stage of their education, training or employment.

We believe that secondary education represents a major stage in the life of each young person and so we aim to work together with parents, carers, governors, agencies and the local community to support our young people; enabling them to develop and grow within this community and in building together a real sense of identity within The Brunts Academy.

We demand excellence of ourselves and our community to best serve our students, so they have an ambitious future. As the Principal of the Brunts Academy, I am proud to recommend it to you as we strive to ensure our Academy improves further in the coming years. We recognise the equal value of each individual young person and we aim to provide the best possible opportunities for your child. We look forward to welcoming you to our community.



Martin Fiddimore
Post 16 Leader

...from the P16 Leader

At the Brunts Academy Sixth Form, students are given a wealth of opportunities to not only further their learning in subjects that they are passionate about, but also to develop as an individual.

Through offering a wide range of academic and vocational subjects, the Sixth Form ensures that students are fully equipped with the skills that they need to achieve some of the highest results in the local area as well as being fully prepared for their futures at university, within apprenticeships or employment.

The Brunts Academy Sixth Form comprises not only of students who have studied at the academy previously, but also students who have joined from other schools. We welcome applications from potential new students who will find a supportive and friendly environment with both staff and existing students supporting them through their time within the Sixth Form.

Our success in enabling students to gain places on competitive university courses and access to further training and employment reflects our dedication to supporting students, ensuring that they achieve their academic potential and individual ambitions. At Brunts Academy Sixth Form, students join a tradition of success and a commitment to academic, extra-curricular and personal development and we look forward to your application.



“Our success in enabling students to gain places on competitive university courses and access to further training and employment reflects our dedication to supporting students to achieve their academic potential and individual ambitions.”

AMBITION

Striving for the highest personal achievement

The Brunts Academy has a dynamic Sixth Form offering a wide choice of subjects and excellent individual support to ensure that all students achieve the best possible grades in their public examinations.

Our Sixth Form comprises of students who have progressed through the earlier years at Brunts and newcomers who have studied at other schools.

Our success in enabling students to gain places on competitive university courses and access to further training and employment reflects our dedication to supporting students to achieve their academic potential and individual ambitions.

Brunts Academy is proud of the success our students have achieved year on year and, through our constant focus on teaching and learning, we see our students develop into lifelong learners whilst enjoying their time with us.

At Brunts you will be part of a student group with a tradition of success and a commitment to academic, extracurricular and personal development.

We look forward to welcoming you into our Sixth Form to see the great experiences that happen here.

A LEVEL PASS RATE

100% for the last 3 years!

The Brunts Academy; Year 13 Progression Pathways vs National Average

2018/19 National % (Released November 2020)*	Brunts: Year 13 (2019 Pathways)	Brunts: Year 13 (2020 Pathways)	Brunts: Year 13 (2021 Pathways)	Brunts: Year 13 (2022 Pathways)
HE 54%	HE 72%	HE 83%	HE 73%	HE 65%
(Russell Group – No longer included in DfE report) (12% in 2018)	(Russell Group) 27%	(Russell Group) 35%	(Russell Group) 53%	(Russell Group) 20%
FE 7%	FE 7%	FE 6%	FE 3%	FE 11%
Employment 20%	Employment 8%	Employment 11%	Employment 6%	Employment 10%
Apprenticeships 7%	Degree or Higher Apprenticeships 5%	Degree or Higher Apprenticeships 0%	Degree or Higher Apprenticeships 9%	Degree or Higher Apprenticeships 5%
Other 12%	Other – gap year/ forces 8%	Other – gap year/forces 0%	Other – gap year/forces 9%	Other – gap year 9%

INTEGRITY

The moral courage to be sincere, reliable and trustworthy at all times

Morning tutorial

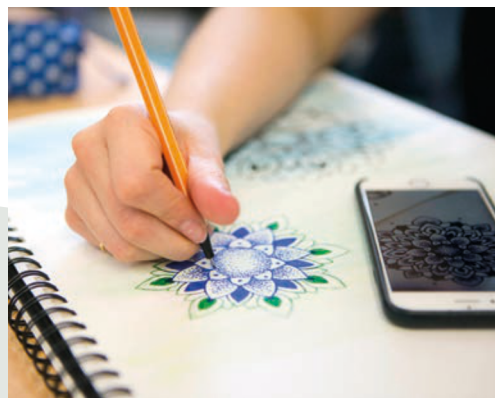
All students are allocated a tutor and tutor group. This session runs alongside whole school registration.

These sessions are used to facilitate the Post-16 tutorial programme, provide guidance and support on next steps and to offer academic mentoring on performance and progress.

Coursework and classwork

We require that all students recognise that the main purpose of entry to the Sixth Form is to obtain further qualifications. Academic work must, therefore, receive high priority and the expectation is for all students to demonstrate scholastic excellence in both their studies and their wider contribution to the academy.

The focus in Sixth Form will be on a smaller number of subjects but with a greater depth of study. Research suggests that a minimum of 4–5 hours per week of independent study is required per subject in order to fulfil potential and secure target grades.



INCLUSIVITY

Together we create a stronger community

16–19 Bursary Fund

The 16–19 Bursary Fund is designed to help support you if you have specific financial barriers to continuing in education or training at Post 16.

The fund has two elements: bursaries for vulnerable young persons (Vulnerable Bursary) and discretionary bursaries for young people facing financial barriers to participation (Discretionary Bursary).

Bursary funds are to be used to help pay for the costs related to participation in full-time education, such as the costs of transport, meals, books and equipment. Some payments may be made in kind.

Full details on whether you are eligible and how to apply for the bursary can be found on our website.

ENDEAVOUR

The best preparation for tomorrow is doing the best today

Getting started

The courses that we offer within the Sixth Form cater for a wide range of interests and expertise. We do always ensure however that appropriate choices are made in line with individual ability. In general, students will take 3 or 4 A Levels/BTEC Level 3 courses, dependent upon their performance at GCSE.

Entry Requirements

Circumstances vary from student to student but you will need to have achieved a minimum of 5 GCSE passes, at grade 6, including English and Maths, however we would be willing to consider a grade 5 in some subjects, at the discretion of the Academy.

It is advised that you speak with relevant subject staff, or a member of the Sixth Form team, before choosing a course.

Choosing your courses

Students are encouraged to take into account their:

- > Interest in the subject.
- > Current performance in the subject.
- > Potential chances of success.
- > A positive attitude to study.
- > A high motivation to succeed.
- > Entry requirements of a particular career.

YOUR RESULTS

6 GCSEs at Grade Point 9–5 (A*–C) including English and Mathematics

Average of Grade Point 7 (Grade A) for selected A Level courses

6 GCSEs at Grade Point 9–5 (A*–C) including English and Mathematics

Average of Grade Point 6 (Grade B) for selected A Level courses

6 GCSEs at Grade Point 9–5 (A*–C) including English and Mathematics

Average of Grade Point 5 (Grade C) for selected A Level courses

YOUR ACADEMIC PATHWAY

Four Advanced Level (A Level) Qualifications. Extended Project is optional

Three Advanced Level (A Level) Qualifications. Extended Project is optional

A combination of Advanced Level (A Level) Qualifications or BTEC Equivalent

RESILIENCE

Take on challenges, learn and thrive

The school day

The Sixth Form is run on a weekly timetable with 5 x 1 hour lessons each day. Your timetable will be 5 lessons per subject, per week.

There will be one addition to the taught aspect of your timetable known as ‘Guidance and Enrichment’ sessions, the purpose of which is to enable you to make informed decisions and to support you in a successful transfer to working life beyond education. The sessions will cover a wide variety of topics ranging from academic mentoring, careers advice, financial awareness, university life, apprenticeships and employment applications.

Enrichment

In addition to the taught aspect of your timetable, all Sixth Form students are required to undertake at least one form of enrichment activity. This is designed to develop life skills and key personal attributes which will aid greatly with future ambitions whilst also ensuring that a significant and meaningful contribution is made to the wider life of the academy.

More details of the wide variety of opportunities on offer will be highlighted during your time in the Sixth Form but a sample can be seen listed here.

- > Reading pairs
- > Lesson support
- > Academic mentoring
- > Breakfast club
- > Lunchtime supervisors
- > Duke of Edinburgh
- > Sports leaders
- > Dance & Drama
- > Music (Band & Choir)
- > Sports teams
- > Lunch/after school clubs
- > Sixth Form committee
- > Peer mentoring

Work experience

The development of essential personal attributes and employability skills are crucial for future development including progression into Higher Education or employment. For students who want to work with people (teachers, doctors, social workers, nurses etc.) this is vital and is also beneficial to all for evidence of personal development for references and personal statements. All students will be expected to secure a high quality, relevant work experience placement in the summer of Year 12.

JOIN US

How to join The Brunts Academy Sixth Form

If you are interested in applying for a place in the Brunts Sixth Form please contact the Sixth Form Administrator at: 6thformadmin@brunts.evolutetrust.org for further information.

A Step by Step Guide:

- 1 Undertake your research and seek advice from different people including: Subject Teachers, Form Tutor, Head of Year, Parents/Carers, Sixth Form Staff
- 2 Make sure you have read the Sixth Form course requirements carefully
- 3 Ensure that you work hard in Year 11 and that your end of year grades meet the eligibility criteria for Post 16 study at The Brunts Academy
- 4 Complete an online/paper application form
- 5 Submit the application by the dates published on the website
- 6 Attend an interview with a member of the Senior Leadership Team
- 7 A firm or conditional offer will be made on successful completion of your interview and on receiving confirmed target grades from your Head of Year or equivalent
- 8 Final acceptance into the Sixth Form will be issued once GCSE results have been confirmed in line with entry requirements for chosen courses.

Some further advice

The Russell Group of Universities have published a guide into making “informed choices” in the Sixth Form. This offers some excellent advice on considerations before selecting subjects at A Level. The guide can be found at: www.informedchoices.ac.uk.

Please ensure that you also consider the following:

- > Ensure that you choose subjects which you find interesting and enjoyable and in which you can perform to the best of your ability.
- > Please be aware (where possible) of subjects and combinations of subjects that are deemed to be ‘facilitating’ in terms of career paths. You should particularly be aware of subjects and combinations that might close any doors that would be best left open.
- > Please be realistic. You must seek advice from teachers as to your suitability for any given Sixth Form course.

Courses offered

- > Art
- > Biology
- > Business Studies
- > Chemistry
- > Computer Science
- > Core Maths AS level
- > Creative Digital Media BTEC National
- > English Language and Literature
- > English Literature
- > Fashion and Textiles
- > Financial Studies LIBF
- > Food Science & Nutrition L3 Applied Diploma
- > French
- > Further Maths AS level & A level
- > Geography
- > History
- > Maths
- > Performing Arts BTEC L3 Ext Certificate
- > Philosophy and Ethics
- > Photography
- > Physics
- > Politics
- > Psychology
- > Sociology
- > Sport BTEC L3 Ext Certificate